

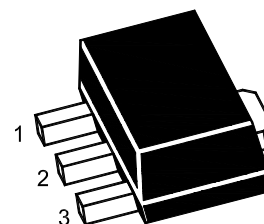
PJ79L08SQ

3-Terminal Voltage Regulator

Features

- Input voltage: up to -30V
- Output voltage: -8V
- Output current: up to 100 mA
- Thermal overload shutdown protection
- Short-circuit current limiting

SOT-89



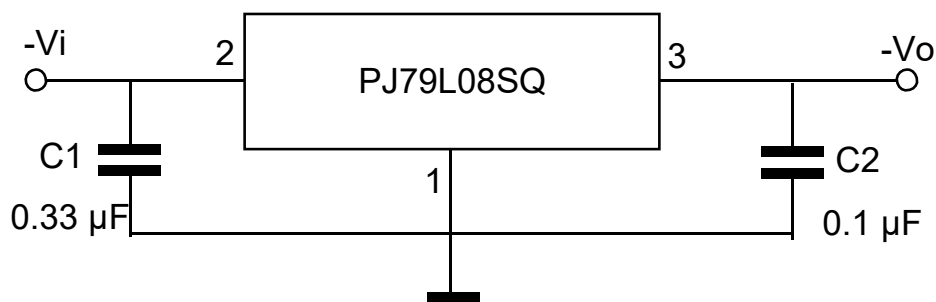
1. GND 2. VIN 3. VOUT

Marking Code : 79L08

Absolute Maximum Ratings

operating temperature range applies unless otherwise specified

Parameter	Symbol	Value	Unit
Input Voltage	$-V_I$	30	V
Power Dissipation	P_D	350	mW
Operating Temperature Range	T_{OPR}	0 to +125	°C
Storage Temperature Range	T_{STG}	-65 to +150	°C





PJ79L08SQ

3-Terminal Voltage Regulator

Electrical Characteristics

$T_J=25^{\circ}\text{C}$, $I_O=40\text{mA}$, $V_I=-14\text{V}$, $C_I=0.33\mu\text{F}$, $C_O=0.1\mu\text{F}$, unless otherwise specified.

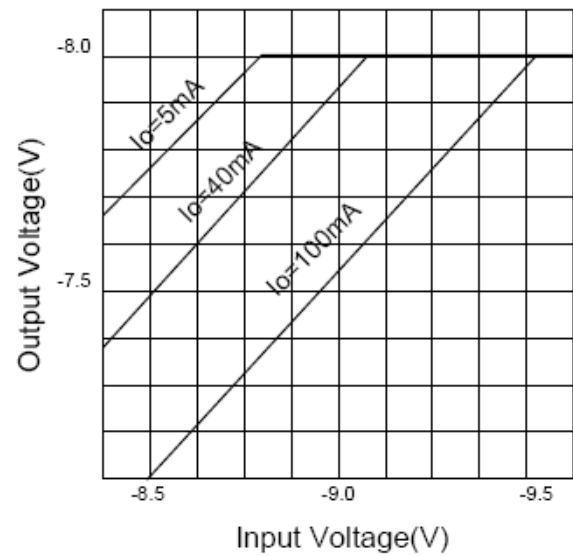
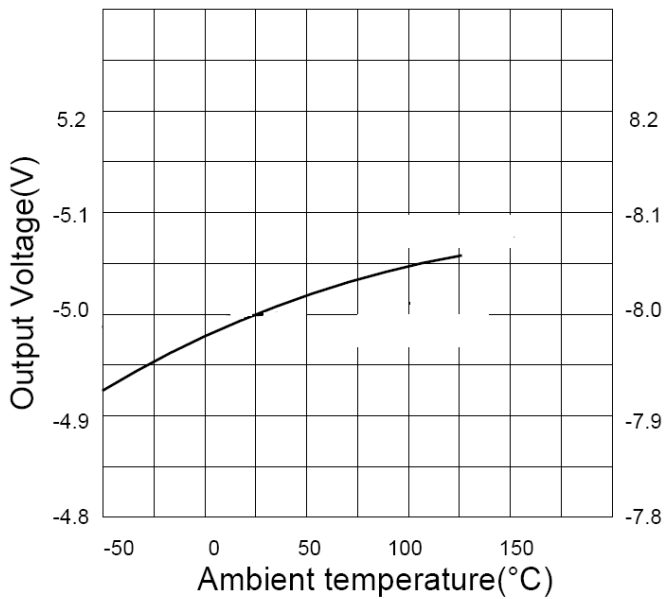
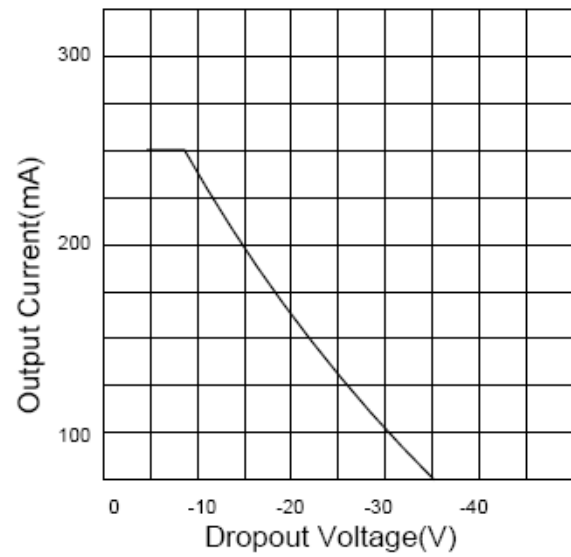
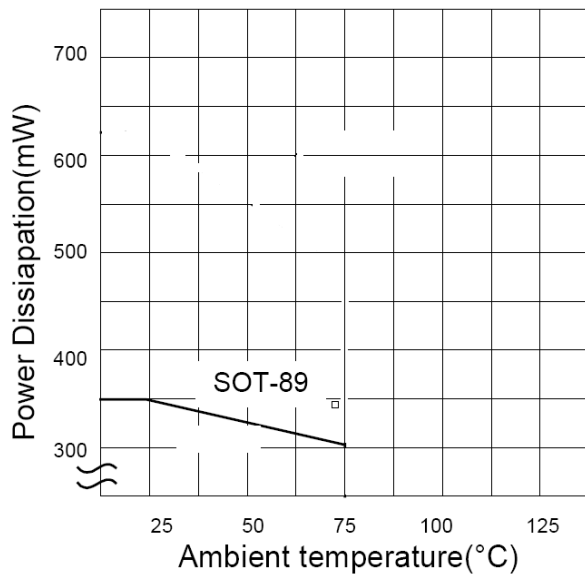
Parameter	Symbol	Test Conditions	Min.	Typ.	Max.	Unit
Output Voltage	$-V_O$		7.68	8.0	8.32	V
		$V_I=-10.5\text{V}\leq V_I\leq -23\text{V}$, $I_O=1\text{mA}\sim 40\text{mA}$	7.6	8.0	8.4	V
		$I_O=1\text{mA}$ to 70mA	7.6	8.0	8.4	V
Line Regulation	ΔV_O	$V_I=-10.5\text{V}$ to -23V	--	--	175	mV
		$V_I=-11\text{V}\leq V_I\leq -23\text{V}$	--	--	150	mV
Load Regulation	ΔV_O	$I_O=1\text{mA}$ to 100mA	--	--	80	mV
		$I_O=1\text{mA}$ to 40mA	--	--	50	mV
Ripple Rejection	RR	$V_I=-11\text{V}$ to -21V , $I_O=40\text{mA}$ $f=140\text{Hz}$, $e_{in}=1\text{Vp-p}$	39	68	--	dB
Dropout Voltage	V_D	$T_J=25^{\circ}\text{C}$	--	1.7	--	V
Quiescent Current	I_Q		--	--	6.0	mA
Quiescent Current Change	ΔI_Q	$V_I=-11\text{V}$ to -23V	--	--	1.5	mA
		$I_O=1\text{mA}$ to 40mA	--	--	0.1	mA
Output Noise Voltage	V_N	$\text{BW}=10\text{Hz}\sim 100\text{kHz}$, $I_O=40\text{mA}$	--	190	--	μV



PJ79L08SQ

3-Terminal Voltage Regulator

Typical Characteristic Curves





PJ79L08SQ

3-Terminal Voltage Regulator

Package Outline

SOT-89

Dimensions in mm



Ordering Information

Device	Package	Shipping
PJ79L08SQ	SOT-89	1,000PCS/Reel&7inches
		3,000PCS/Reel&13inches