



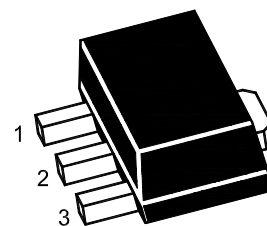
# PJ79L05SQ

## 3-Terminal Voltage Regulator

### Features

- Input voltage: up to -30V
- Output voltage: -5V

SOT-89



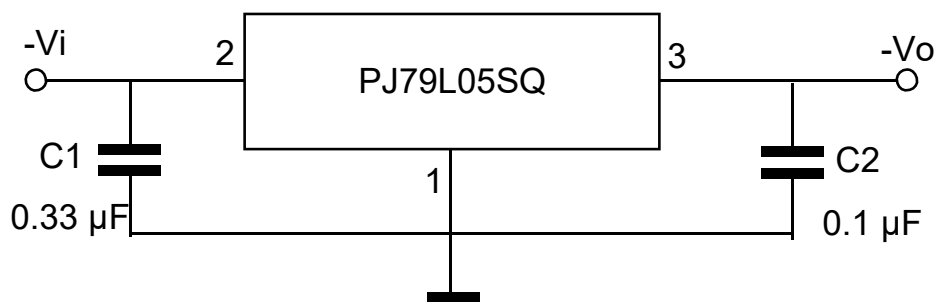
1. GND 2. VIN 3. VOUT

Marking Code : 79L05

### Absolute Maximum Ratings

operating temperature range applies unless otherwise specified

Parameter	Symbol	Value	Unit
Input Voltage	$-V_i$	30	V
Junction Temperature	$T_J$	150	°C
Operating Temperature Range	$T_{OPR}$	-40 to +125	°C
Storage Temperature Range	$T_{STG}$	-55 to +150	°C





# PJ79L05SQ

## 3-Terminal Voltage Regulator

### Electrical Characteristics

$-V_i=10\text{ V}, I_o=40\text{ mA}, C_i=0.33\mu\text{F}, C_o=0.1\mu\text{F}$ , unless otherwise specified.

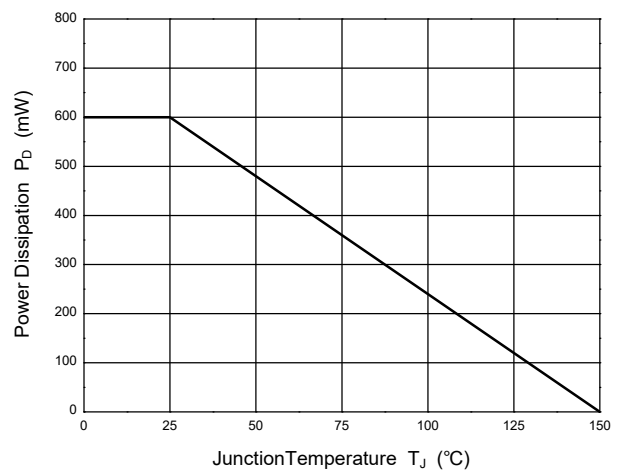
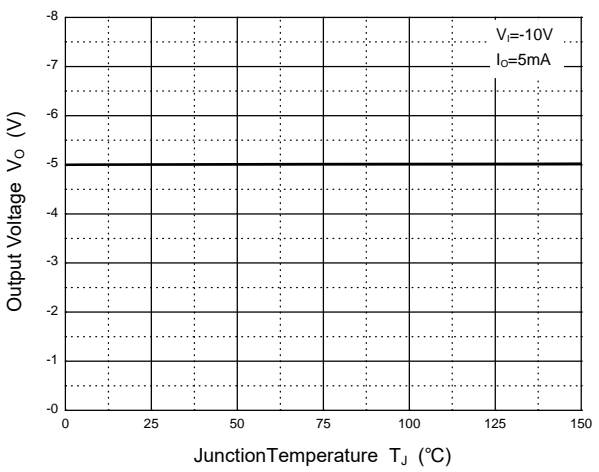
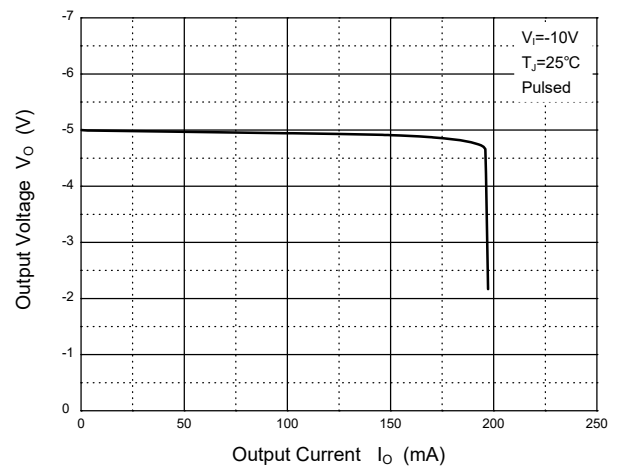
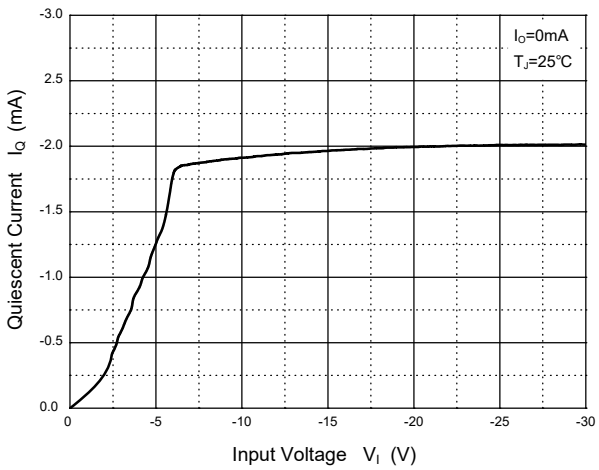
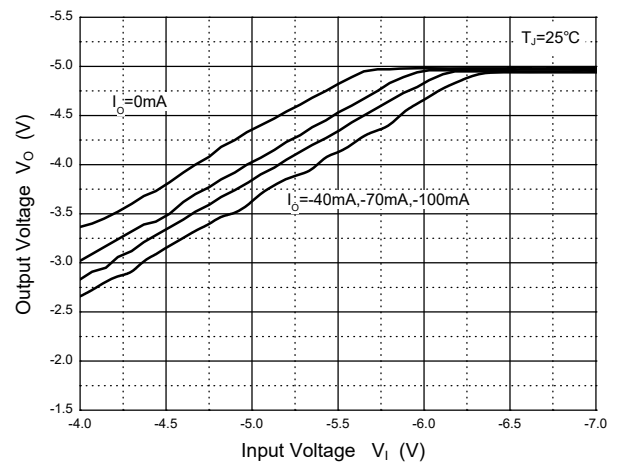
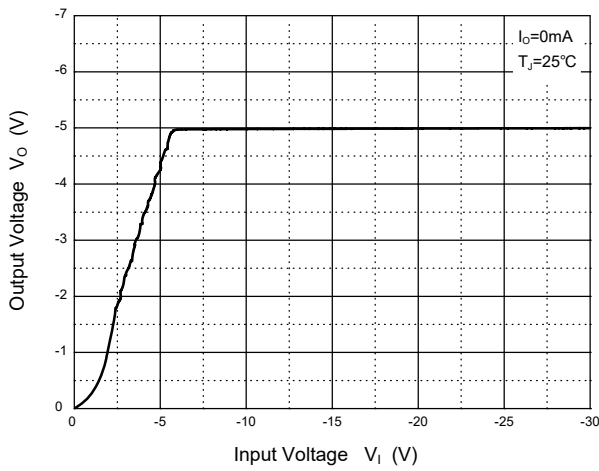
Parameter	Symbol	Test Conditions	Min.	Typ.	Max.	Unit
Output Voltage	$-V_o$	$I_o=40\text{ mA}, T_J=25^\circ\text{C}$	4.80	5.0	5.2	V
		$I_o=1\text{ mA to }40\text{ mA},$ $V_i=-7\text{ V to }-20\text{ V}, T_J=0^\circ\text{C}\sim 125^\circ\text{C}$	4.75	5.0	5.25	V
		$I_o=1\text{ mA to }70\text{ mA}$	4.75	5.0	5.25	V
Line Regulation	$\Delta V_o$	$V_i=-7\text{ V to }-20\text{ V}, T_J=25^\circ\text{C}$	--	15	150	mV
		$V_i=-8\text{ V to }-20\text{ V}, T_J=25^\circ\text{C}$	--	12	100	mV
Load Regulation	$\Delta V_o$	$I_o=1\text{ mA to }100\text{ mA}, T_J=25^\circ\text{C}$	--	20	60	mV
		$I_o=1\text{ mA to }40\text{ mA}, T_J=25^\circ\text{C}$	--	10	30	mV
Ripple Rejection	RR	$V_i=-8\text{ V to }-18\text{ V},$ $f=120\text{ Hz}, T_J=0^\circ\text{C}\sim 125^\circ\text{C}$	41	49	--	dB
Dropout Voltage	$V_D$	$T_J=25^\circ\text{C}$	--	1.7	--	V
Quiescent Current	$I_q$	$T_J=25^\circ\text{C}$	--	--	6	mA
Quiescent Current Change	$\Delta I_q$	$V_i=-8\text{ V to }-20\text{ V}, T_J=0^\circ\text{C}\sim 125^\circ\text{C}$	--	--	1.5	mA
		$I_o=1\text{ mA to }40\text{ mA},$ $T_J=0^\circ\text{C}\sim 125^\circ\text{C}$	--	--	0.1	mA
Output Noise Voltage	$V_N$	$10\text{ Hz}\leq f\leq 100\text{ KHz}, T_J=25^\circ\text{C}$	--	40	--	$\mu\text{V}/V_o$



# PJ79L05SQ

## 3-Terminal Voltage Regulator

### Typical Characteristic Curves





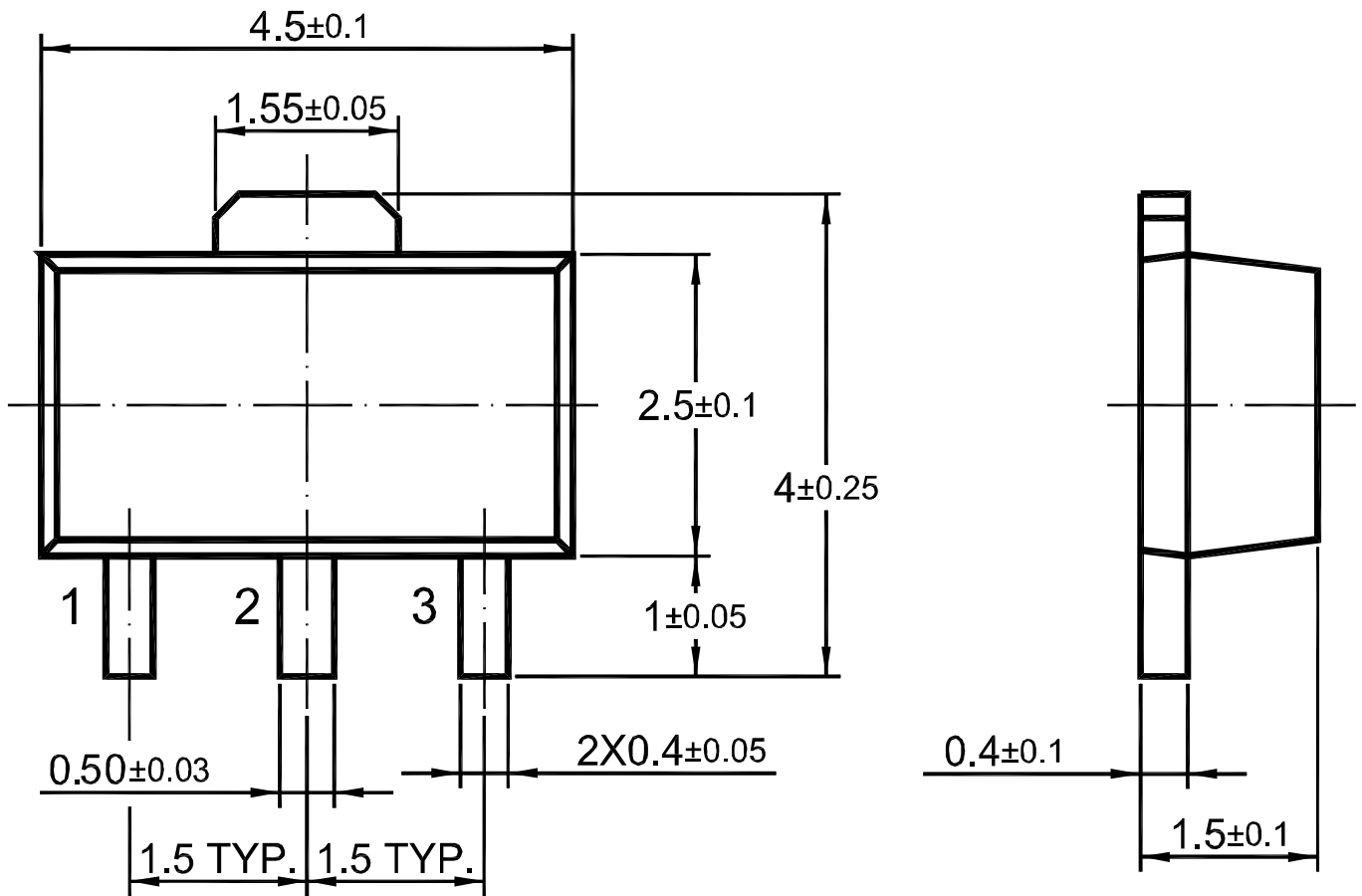
# PJ79L05SQ

## 3-Terminal Voltage Regulator

### Package Outline

SOT-89

Dimensions in mm



### Ordering Information

Device	Package	Shipping
PJ79L05SQ	SOT-89	1,000PCS/Reel&7inches
		3,000PCS/Reel&13inches